



Christus Vincit

# St. Wilfrid's Catholic Parish Church

[www.swkp.org.uk](http://www.swkp.org.uk)

St. Wilfrid's Cottage 97 Lorrimore Road, Kennington Park. SE17 – 3LZ 0207 358 4259  
Fr. Vincent Flynn, Parish Priest: [stwilfrids97@gmail.com](mailto:stwilfrids97@gmail.com) Rev. John Greenwood: [WJohngreenwood@aol.com](mailto:WJohngreenwood@aol.com)

**17 February 2019 (C)**

16<sup>th</sup> Saturday

First Mass of Sunday

**17<sup>th</sup> Sunday**

Sixth Sunday

Racial Justice

5.00pm  
9.30am  
9.40am  
10.00am  
11.00am  
11.30am  
12.00pm

**Mass** People of the Parish

Confessions

Rosary

**Mass** Andaye Family Intentions

Tea & Coffee

Confessions

**Mass** Sahira Byrne & Family

18<sup>th</sup> Monday

19<sup>th</sup> Tuesday

6.10pm

**6.30pm**

7.30pm

**No Mass**

Rosary

**Mass** koyabanzoua Family intention

Legion of Mary

20<sup>th</sup> Wednesday

9.40am

**10.00am**

10.20am

Rosary

**Mass** Denis Howard, RIP

Tea & Coffee

21<sup>th</sup> Thursday

9.40am

**10.00am**

Rosary

**Mass** Ted Whiting, RIP (Birthday)

22<sup>nd</sup> Friday

Chair of St. Peter

9.40am

**10.00am**

10.20am

10.30am

10.50am

Rosary

**Mass** Mary O'Dwyer, RIP

Exposition & Adoration

Vocations to the Priesthood

Confessions

Benediction

23<sup>rd</sup> Saturday

St. Polycarp

9.40am

**10.00am**

10.20am

10.30am

10.50am

Rosary

**Mass** Kathleen Gray, RIP

Exposition & Adoration

Vocations to the Diaconate

Confessions

Benediction

First Mass of Sunday

24<sup>th</sup> Sunday

Seventh Sunday

4.30pm

**5.00pm**

9.30am

9.40am

**10.00am**

11.00am

11.30am

Confessions

**Mass** Gerald Hope (Welfare)

Confessions

Rosary

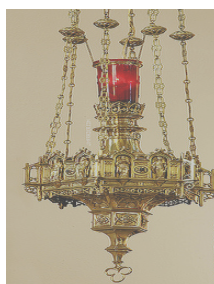
**Mass** People of the Parish

Tea & Coffee

Confessions

**12.00pm**

**Mass** Huda Aias, RIP



## THE SANCTUARY LAMP

IS BURNING PERPETUALLY THIS WEEK FOR:

**YEMI KOROMA, RIP**

Requests via the sacristy. Recommended minimum donation £10

THANK YOU FOR LAST SUNDAY'S COLLECTIONS:

1<sup>st</sup> £476 Maintenance & Heating £209

SO THAT THE LORD'S WORK MIGHT CONTINUE,  
PLEASE CONSIDER LEAVING  
A LEGACY TO ST. WILFRID'S.

1<sup>st</sup> Holy Communion  
Confirmation  
RCIA

Classes  
recommence

**Saturday**

**2<sup>nd</sup> March**

## CONCERT IN AID OF THE PASSAGE

The Passage is a Christian Charity working with homeless people. Please support a St David's Day concert in aid of The Passage at Methodist Central Hall, Westminster on Friday 1 March 2019 at 7.00pm.

The concert features the London Welsh Male Voice Choir with guest soloists Fflur Wyn (soprano) and Aled Wyn Davies (tenor) and Edward Stourton (Compère). Please book online through Eventbrite: (<https://passage-saint-david-day-concert.eventbrite.co.uk>)

[www.passage.org.uk](http://www.passage.org.uk)

020 75921856

[info@passage.org.uk](mailto:info@passage.org.uk)

## FLAME 2019

On the 2 March at the SSE Arena Wembley from 12pm – 6pm over 10,000 young Catholics (Aged 10-13) will gather with Cardinal Vincent to celebrate their faith. This will be a lively event and very enriching for all who attend. Tickets need to be purchased in advance. If any family needs financial support, please speak with a member of the clergy.

<http://catholicyouthwork.com/flame-2019-online-booking-now-open/>

## THE GENDER AGENDA

Sponsored by the Association of Catholic Women

St. Mary Moorfield

London EC2M 7LS

12 June 2019 11am

What does it mean to be male and female? How & why are the two sexes different? Come and explore a Catholic perspective.

## SECOND COLLECTION

Please be generous in the second collection which will pay for the heating system, **£15,600**, and the ongoing maintenance of the Church.

## OUR PARISH

'What is it that God wants from our parish?'. The reality is it is His parish, and we are His instruments. What are the local needs we should be addressing as a parish? Are there areas of parish life in which you would like to be more involved? Are there people to whom we should be reaching out. Are there areas to which we need to devote more time & resources?